



Because your profit is on the line™

# REAL-TIME QUALITY CONTROL SOFTWARE

WinSPC is real-time statistical process control software used by quality teams to improve product quality, reduce process variation, and optimize manufacturing processes.

WinSPC collects process data from the shop floor and transforms it into real-time, actionable quality information for operators, quality personnel, manufacturing engineers and management.

**IMPROVE PRODUCT QUALITY**

**INCREASE CUSTOMER SATISFACTION**

**REDUCE SCRAP, WASTE & REWORK**

**OPTIMIZE PROCESSES & YIELD**

**ACHIEVE REGULATORY COMPLIANCE**



# WINSPC<sup>®</sup>

STATISTICAL PROCESS CONTROL

## PERFORM REAL-TIME STATISTICAL PROCESS CONTROL

### Who Uses WinSPC?

Quality teams, statisticians, plant managers, manufacturing process engineers, & executives who need to know:

Is my process in control?

Am I making good product?

Is my process efficient?

Where should I focus my attention?



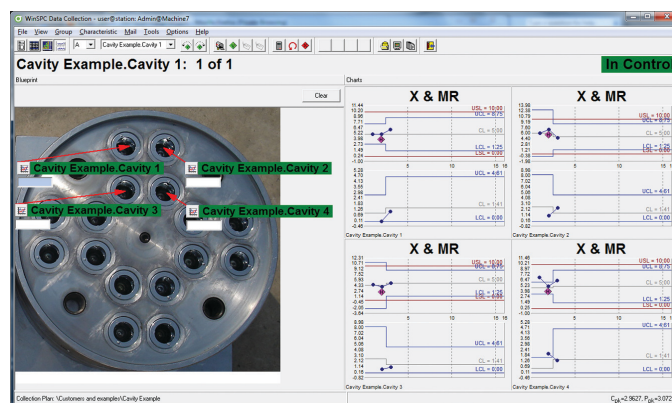
### CAPTURE

Collect shop-floor data in real-time from virtually any source—gages, devices, machines, and other data sources. WinSPC's simple, three-step connection process makes it easy to simply connect and begin collecting data from almost anything.

Connect and collect data from any RS232 serial or USB device

Capture data from text files, .csv files, Microsoft Excel, any ODBC-compliant database, or machines such as CMMs or PLCs

Integrate with other manufacturing systems using OPC, OLE, and DDE—WinSPC's built-in APIs supports over 500 OLE methods and properties





## MONITOR

Empower your operators with real-time, actionable intelligence. WinSPC displays real-time control charts on the shop floor—enabling your team to immediately detect and correct process issues.

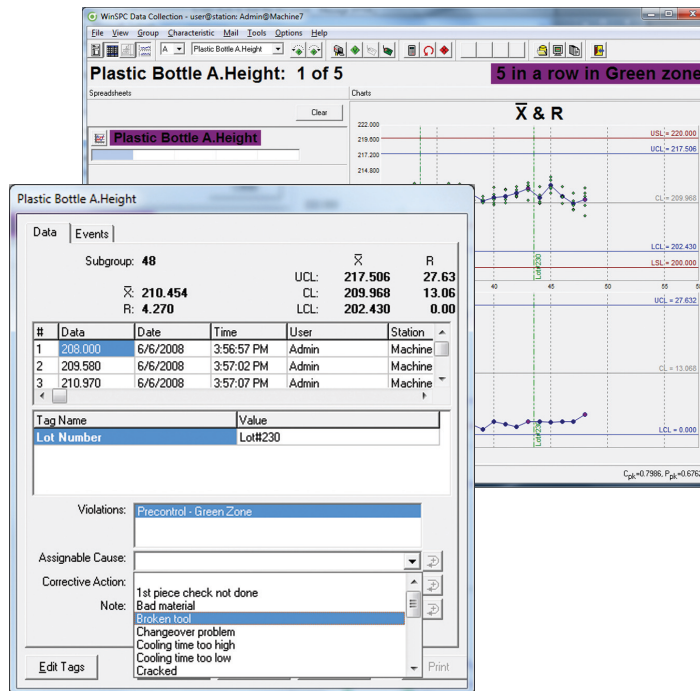
Display a variety of control charts and SPC charts

Customize screen layouts

Scroll to view data from the “beginning of time”

Save time using built-in support for standard SPC rules

Click to drill-down and perform statistical analysis



## ALERT

Automatically alert personnel, execute custom programs, shut down machines, or engage other systems if a non-conformance or rule violation occurs using WinSPC's built-in triggers. Whether your requirements are as simple as sending an email or as complex as triggering a process within a corrective action system, WinSPC gives you the power to close the quality loop from “detection-to-correction.”

Use a simple pull-down menu to schedule a variety of different notifications and alarms for nearly any condition

Program your own custom triggers to schedule enterprise-wide alarms or communicate bidirectionally with other systems or machines or send a command to a device

# PLANT MONITOR

## MANAGE PLANT-WIDE PERFORMANCE

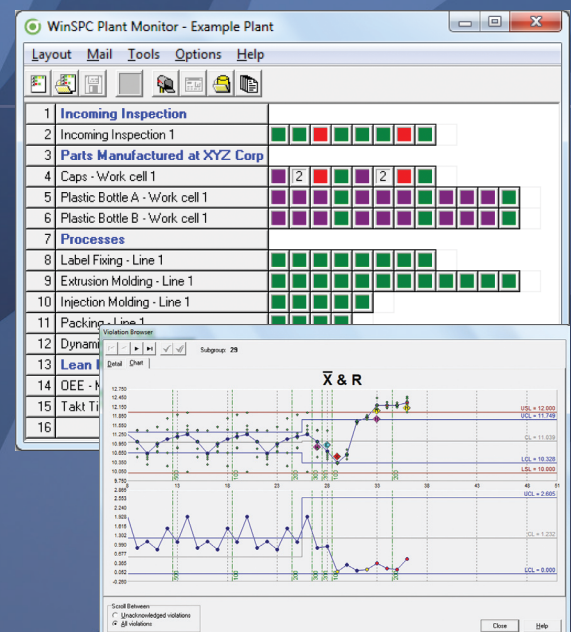
Gain a bird's eye view of shop floor processes, resolve problems faster, and manage more effectively using WinSPC Plant Monitor. It runs on the desktop and displays real-time statistics for every data collection station in one convenient window—giving managers a summary view into their plant's performance from a single screen.

View visual alerts for problem areas

Mouse-over cells for detailed statistics

Acknowledge alerts from your desktop

Drill-down to investigate, view details, and resolve issues



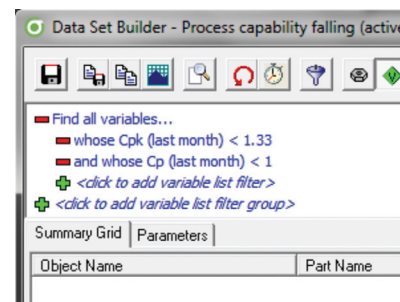


## IDENTIFY, PRIORITIZE & SOLVE QUALITY ISSUES



### EXPOSE

Answer questions, detect changes and discover trends with WinSPC's data sets. Using data sets quality teams can identify, prevent, and prioritize quality issues at a macro level. Unlike the traditional microscopic nature of SPC, which focuses on a specific variable, data sets offer a broad view of your database—enabling you to proactively monitor and uncover high priority issues.



Scan, query, and filter large amounts of data

Maintain a watchful eye over multiple processes

Expose areas in need of improvement

Reveal potential issues before they become problems

**Which processes have:**  
the most variability?  
a history of violations?  
changed recently?  
the highest cost due to variability?

### INDUSTRIES SERVED

ALTERNATIVE ENERGY

BUILDING MATERIALS

COMPUTER, SEMICONDUCTOR  
& COMPUTER-RELATED  
ELECTRONICS

ELECTRONICS & APPLIANCES

FOOD & BEVERAGE

PACKAGING

PLASTICS, RUBBER, PAPER

PRIMARY & FABRICATED METAL

TRANSPORTATION



### ANALYZE

Experiment, visualize, and reveal more information about any variable using the one-click variable analyzer. The variable analyzer delivers both point-of-production and historical analysis capabilities. It puts an entire set of statistical tools at your fingertips—giving you a comprehensive view of your data from one convenient screen.

Drill down for detailed views

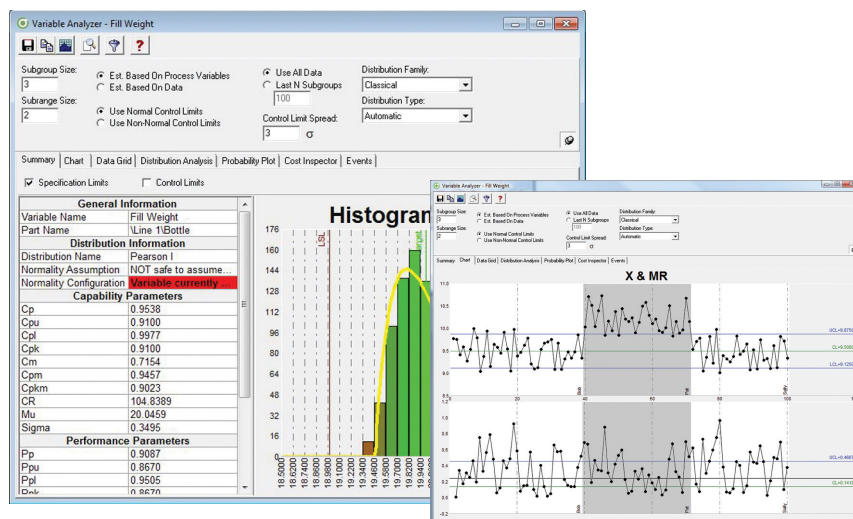
Sort, group, and filter data to reveal issues and draw conclusions

Slice and dice data and perform “what-if” analysis

Manipulate the options that affect your statistical calculations like subgroup size, data range, distribution type, and more

Review all events logged for a particular variable

Copy/paste or export data to other popular formats







## JUSTIFY

Identify the hidden cost of give-away, overfill, rework or scrap that weaken a company's profits using WinSPC's Cost Inspector™. The Cost Inspector links manufacturing cost information with current and historical process data, empowering quality teams to:

Search process data across all operations to uncover costly process problems

Identify sources of give-away, overfill, scrap or waste

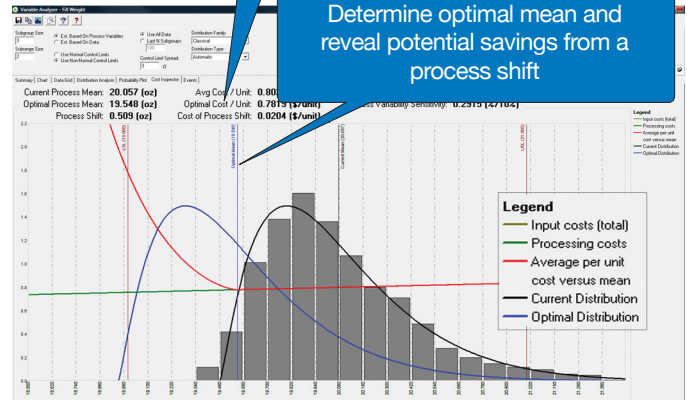
Calculate potential savings per unit by reducing process variation or shifting processes to optimal mean

Translate process improvement statistics into dollars saved for the company

Produce cost-based reports to show executive management the return on investments in quality

Use process data to display unit cost due to variation

Determine optimal mean and reveal potential savings from a process shift



## REPORT

Quickly create, publish and share quality reports across your organization using WinSPC's graphical report builder and dozens of standard report templates.

Build hundreds of custom reports using a visual interface—no programming skills required

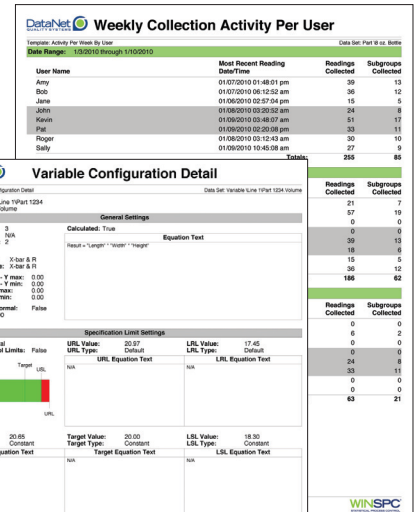
Publish to PDF or HTML and email in a single click

Leverage a library of commonly used report templates

Configure your own library of commonly run reports

Link reports to data sets to quickly right-click and produce reports

Automate daily, weekly, or monthly reporting tasks with WinSPC and Microsoft Task Scheduler



WINSPEC STATISTICAL PROCESS CONTROL					
Process Variation Report (by Part; Variable)					
	CPK	CP	PPM	SIGMA	COST
Part: Bottle 1					
Variable: Fill Weight					
1st Quarter	0.5991	0.6420	72,288	0.5192	\$126,504.00
2nd Quarter	1.6741	1.6926	<1	0.3939	\$1.75
<b>Qtr/Qtr Savings</b>					<b>\$126,502.25</b>
Variable: Wall Thickness					
1st Quarter	0.8406	1.3447	11,676	0.0916	\$43,785.00
2nd Quarter	1.2780	1.5320	126	0.0692	\$472.50
<b>Qtr/Qtr Savings</b>					<b>\$43,312.50</b>
Part: Bottle 2					
Variable: Fill Weight					
1st Quarter	0.9558	1.0230	4,139	1.6628	\$7,243.25
2nd Quarter	1.2652	1.2790	147	0.6511	\$257.25
<b>Qtr/Qtr Savings</b>					<b>\$6,986.00</b>
Variable: Wall Thickness					
1st Quarter	1.3994	1.4934	27	0.0805	\$101.25
2nd Quarter	1.1012	1.2423	955	0.0670	\$3,581.25
<b>Qtr/Qtr Savings</b>					<b>\$3,480.00</b>



## COMPLY WITH REGULATORY REQUIREMENTS

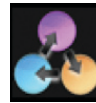
WinSPC's event log feature enables manufacturers who are subject to regulatory requirements (FDA, USDA, ISO, TS, etc.) to build auditability into their manufacturing process.

Support FDA 21 CFR part 11 requirements for electronic signatures and forced log outs for system security

Capture, trace and securely store process data for auditability

Record every system event, including the deletion of event log items, electronic signatures, and system configuration changes

Quickly filter and retrieve nearly all system activities such as startup/shutdown, security, administration, data collection and violations



## EXCHANGE INFORMATION WITH SYSTEMS & SOFTWARE

Integrate WinSPC with other software and hardware using our built-in APS's with over 400 methods and properties of OLE . WinSPC also communicates bidirectionally with other systems, software and devices via OPC (Version 1, 2, and 3), DDE, serial, and ODBC.

Built-in APIs

Over 400 methods and properties of OLE

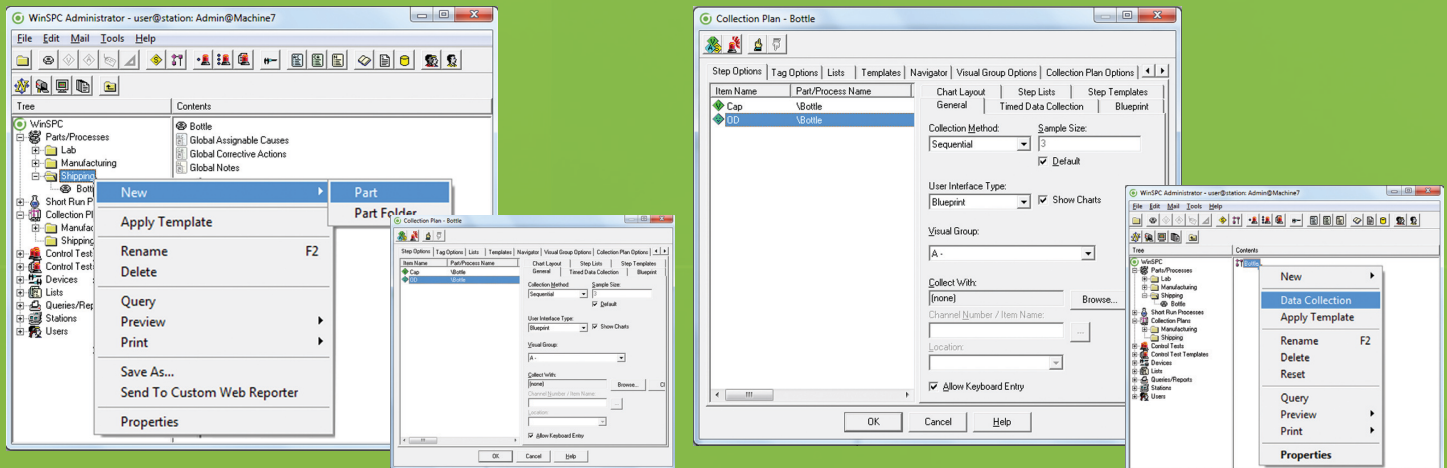
Bi-directionally communicate with intelligent machines and devices

Successfully integrate with other MES, ERP, HMI systems

## EASY TO MANAGE & OPERATE

### REAL-TIME SPC IN 4 EASY STEPS

WinSPC provides a fast, efficient interface to quickly create, organize, and manage quality programs on a global scale, including all your parts or processes, variables, attributes, tags, and test plans—enabling you to manage large amounts of data and complex parts and processes.

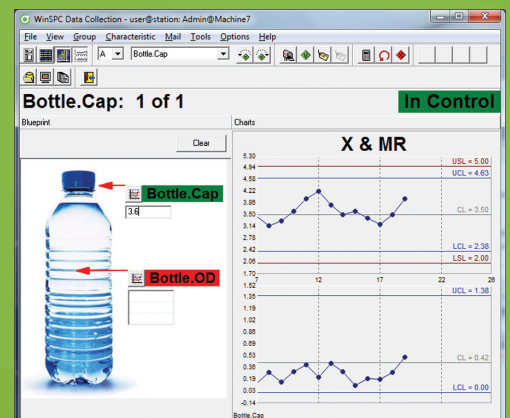


- 1 CREATE A PART OR PROCESS
- 2 SETUP A VARIABLE OR ATTRIBUTE
- 3 BUILD A COLLECTION PLAN
- 4 BEGIN DATA COLLECTION MODE

## TRAIN OPERATORS IN LESS THAN 30 MINUTES

WinSPC offers three simple manual data collection interfaces--all capable of being mastered in minutes regardless of a shop floor operator's level of computer expertise. Choose the layout that works best for you and your team, or customize your own screen to mimic a legacy system.

ADD DRAWINGS OR PICTURES TO INTUITIVELY GUIDE USERS THROUGH THE DATA COLLECTION PROCESS



## DATA COLLECTION

Collect data from any RS232 or USB device

Collection rate: 100 points per second

Collect data in the event of a network failure

Collect tag values, specification limits, targets, or raw data

Prompt for data entry at fixed-time intervals

Supports bidirectional communication using industry standard protocols

## OPERATOR INTERFACE

Standard, blueprint or spreadsheet mode interface styles

Visually intuitive red-green interface

Customize screen layout

Prompt operators to enter data at fixed time intervals

Cue operators to enter corrective actions, assignable causes and notes

Imbed pictures, drawings or video into collection interface

Launch work instructions from the menu bar

## MONITORING

Built-in support for Western Electric, Nelson and Shewhart rules

Built-in equation builder to execute simple or complex calculations from raw data being collected

Right-click to toggle views and display data in different charts

Scroll to view data from the "beginning of time"

Set fixed control limits or automatically recalculate control limits

## CHARTS

X-bar & R

X-bar & S

X-MR

Median (R)-R

P, Np, C, U, Q

Tabular Cusum

EWMA chart

EWMV

EVMS

EWRMS

Time Series

Z & W

Difference & MR

Z-bar & S

Difference-bar & R

Run charts

Pareto charts

Frequency histograms

## TRIGGERS & ALARMS

*(Custom triggers available)*

Message box with instructions

Launch electronic work instructions

Post violation data to a log

Prompt operators for notes, assignable causes and corrective actions

Launch an external .exe file

Reject "unreasonable" data and prompt for another reading

Send a command to an OPC, OLE, DDE, or serial device

Increment an attribute pass/fail count

Write data to a .txt or .csv file

## ANALYSIS

Variable analyzer

Multivariate analysis with English-language queries

Cost Inspector™

Process capability studies

Scatter diagrams

Box and Whisker charts

## REPORTS

Capability

Production summary

Certificate of analysis

Continuous improvement

Activity by user

Performance against specifications

Statistical summary

Configuration error

Violation listing

Variable configuration detail

Data collection history

Process variability summary

Process cost detail

Cost of process change

## ADMINISTRATIVE & TECHNICAL

One-touch upgrades

Centralized administration and granular, role-based security

Automatic disconnect protection (continuous data collection in the event of a network failure)

Standard, relational database stores data centrally

Multi-language support: English, Spanish, German, French, Portuguese



## SUPERIOR RETURN ON INVESTMENT

The average DataNet customer achieves a 400-600 percent return on their investment within the first year of installing WinSPC. Ask your sales consultant for our return on investment calculator and determine how WinSPC can boost your bottom line.

## FAST IMPLEMENTATION

Use DataNet's Solution Delivery service to get your project up-and-running quickly and efficiently. DataNet's team of implementation experts understand SPC, data collection, and information technology—plus offer years of experience installing WinSPC at thousands of manufacturing facilities across the globe.

Most WinSPC customers have their staff trained and SPC programs operational after DataNet's three-day implementation service. The majority begin earning a return on their investment in as little as 30 days.



**GAMMA SCALE™** 1-888-426-6218 (GAMMA18)  
24/7 Service: 416-388-9988  
**Weighing Instruments Sales & Service**

Tel: (905)455-8333  
Fax: (905)455-0658  
E-mail: [info@gammascale.com](mailto:info@gammascale.com)  
Website: [www.gammascale.com](http://www.gammascale.com)

DataNet Quality Systems empowers manufacturers to improve products, processes, and profitability through real-time statistical software solutions. The company's vision is to deliver trusted and capable technology solutions that allow manufacturers to create the highest quality product for the lowest possible cost.

With over 2500 installations worldwide and distributors across the globe, DataNet is dedicated to delivering a high level of customer service and support, shop-floor expertise, and professional Continuous Improvement, Six Sigma, and Lean Manufacturing services.

## THE WORLD'S FINEST BRANDS CHOOSE WINSPC FOR SUPERIOR QUALITY CONTROL

Hershey Foods Corporation  
Harley-Davidson Buell  
Abbott Laboratories  
Suniva  
Applied Materials  
Western Digital  
Trane  
Hitachi  
Tyco  
Black & Decker  
GAF Materials  
Sara Lee  
Tropicana  
Welch's  
Bausch & Lomb  
Symmetry Medical  
Borg Warner  
Federal Mogul  
Pratt & Whitney (United Technologies)  
Magna  
Toyota  
Graphic Packaging  
Amway  
Westlake Chemical  
ArcelorMittal  
Dofasco, Inc  
Goodrich  
Kawasaki